

WHEEL AND TIRE CATALOG

VOLUME 25





WHEEL SPECIALISTS, INC.
WHEEL SPECIALISTS, INC.
CUSTOM TAILORED WHEEL & TIRE PACKAGES



For over 25 years WVS has been the industry leader in custom-tailored wheel and tire packages. Our goal has always been to provide the highest quality products and offer the best possible service at a competitive price. We take great pride in serving some of the finest independent tire dealers, automotive dealerships and aftermarket specialty shops all around the country. Our wish is to earn and establish long term working relationships with our customers. We maintain a comprehensive inventory of high quality aftermarket wheels, tires, and accessories from the leading manufacturers in the industry. Whether you are looking to fit an exotic, everyday driver, truck, or SUV, contact us today and one of our very knowledgeable, experienced staff members will be at your service.



Passenger, Truck & SUV Wheels

	2Crave	02
	Avenue	04
	BBS	04
	Beyern	06
	Black Rhino	07
	Coventry	09
	Cray	09
	GFG	10
	Genius	11
	Gianelle	11
	Giovanna	14
	Heavy Hitters	16
	Koko Kuture	17
	Lexani	19
	Mandrus	22
	MKW	23
	Redbourne	24
	RSR	25
	Savini	27
	TSW	28
	Victor Equipment	32
	Vorsteiner	33
	Vossen	34

Off Road Wheels

	2Crave Xtreme	40
	Black Rhino Off Road	41
	Hostile	44
	Koko Solid	46
	MKW Off Road	47
	RBP	48
	Remington	50
	Sota	52

Tires

	Delinte	54
	Falken	54
	Forgiato	55
	Ohtsu	55
	Pirelli	55
	Vredestein	55

Accessories	56
Chrome Exchange	57
PVD Chrome / Powdercoating	58
Vehicle Gallery	59
Wheel Specifications	63
Terms and Conditions	64
Services and Information	65

Other Brands Available

Avant Garde	CEC	Forgestar	Michelin	Rota	U.S. Mags
Advanti Racing	Centerline	Forgiato	Miro	Rotiform	U.S. Wheel
Adventus	Concept One	Fuel	Modulare Forged	Rovos	VCT
American Racing	Continental	Gianna	Momo	Ruff Racing	Velgen
AMG	Diablo	Goodyear	Moto Metal	Showwheels	Vellano
Asanti	Dolce	Gorilla	MRR	Speedy	Verde
Asanti Black Label	DPR Off Road	Hankook	Neuspeed	Stance	Versante
ATX	Dub	H & R	Nexen	Status	Vertini
Ballistic	Enkei	Hipnotic	Niche	STR	WELD
Bavaria	ESM	I-Forged	Nitto	Strut	Work
BFGoodrich	ESR	Katana	Pro Comp	Sumitomo	XD
Big Bang	fifteen52	Klutch	Red Dirt Road RDR	Toyo	XO Luxury
Billet Specialties	Firestone	KMC	Redline	TPI Spacers	XXR
Blaque Diamond	Floater Caps	Kumho	Rennen Forged	Tire Pressure Sensors	Yokohama
Brabus	Foose	Lorinser	REV	Tuff A.T.	
Bridgestone	Forgeline	Method	Rohana	Uniroyal	

Unique and modernistic trendsetter, yet classic and elegant conservative with a touch of renaissance luxury, 2Crave encompasses and praises beauties of everyday life and individuals within. 2Crave's effortless style, seamless craftsmanship, and unsurpassed visual refinement bring values that only the finest can offer.



No. 11
SATIN BLACK
22", 24", 26"



CHROME



No. 15
SATIN BLACK
22", 24", 26"



CHROME



No. 18
GLOSS BLACK
22", 24", 26"



CHROME



No. 19
GLOSS BLACK MACHINED
FACE W/ CHROME LIP
24", 26"



CHROME



No. 21
GLOSS BLACK
MACHINED FACE
22", 24"



CHROME



No. 34
GLOSS BLACK
MACHINED FACE
20" 22"



CHROME



No. 35
SATIN BLACK
20", 22"



CHROME

BLACK DIAMOND SERIES



No. 2
GLOSS BLACK W/ MACHINED FACE
& MACHINED STRIPE
17", 18", 20", 22"



No. 4
GLOSS BLACK W/ MACHINED FACE &
MACHINED STRIPE
20", 22", 24"

FIERO SERIES



No. 1
GLOSS BLACK W/ RED LIP
18", 20", 22"

GLOSS BLACK W/ MACHINED
FACE & RED STRIPE



No. 5
GLOSS BLACK W/ RED STRIPE
17", 18", 20", 22", 24"

GLOSS BLACK W/ CHROME
ATTACHMENT & RED STRIPE



MACH SERIES



ME. 5
HYPER SILVER MACHINED FACE
16"-20", 22"

GLOSS BLACK
MACHINED FACE



ME. 10
SATIN BLACK
18"-20", 22"

HYPER SILVER
MACHINED FACE



ME. 11
SATIN BLACK
19"-20"



ME. 15
GLOSS BLACK
MACHINED FACE
17"-20"



ME. 20
GLOSS BLACK
MACHINED FACE & LIP
22"



A607
SATIN BLACK
20", 22", 24"

CHROME



A613
BLACK MACHINED
18", 20", 22", 24"

SILVER



A610
SATIN BLACK
18", 20", 22", 24"

CHROME



A614
SATIN BLACK
18", 20", 22", 24"

CHROME

Other styles and finishes available, visit our website to view the full line of Avenue Wheels.



BBS stands for the highest standards of quality, accumulated expertise in wheel design and over 35 years of racing experience. Vehicle manufacturers from around the world seek their unique OEM competence and absolute reliability. BBS produces all cast wheels exclusively in Germany and according to the highest standards in quality.



CH-R
MATTE BLACK
19", 20"

SILVER



CK
SILVER
20"



CI-R
PLATINUM SILVER
20"



FI-R
DIAMOND BLACK
18", 20", 22", 24"

DIAMOND SILVER



LM
SILVER
18"-20"



GOLD W/ SILVER LIP



RD-T
SILVER W/ DIAMOND
CUT LIP
20", 22"



RS-GT
SILVER
18", 20"



SR
VOLCANO GRAY
DAIMOND CUT
16"-19"



RG-R
DIAMOND BLACK
17"-20"



SV
BLACK DIAMOND CUT
20", 22"



TITANIUM



RE
DIAMOND BLACK
18", 20", 22", 24"



SILVER



XA
VOLCANO GRAY
DAIMOND CUT
18"-20"



Beyern designs and manufactures custom wheels to fit BMW vehicles. Engineered to be hub-centric and built to the tightest tolerances, Beyern Wheels are offered in a wide range of staggered BMW wheel applications.



MULTI SPOKE

SILVER W/ MIRROR
CUT LIP
17"-20"

CHROME



AVIATIC

MATTE GUNMETAL W/
GLOSS BLACK LIP
17"-20"

SILVER W/ MIRROR
CUT LIP



MUNICH

2 PIECE
SILVER W/ MACHINED
FACE & CHROME LIP
18"-20", 22"

MATTE BLACK



MESH

GLOSS BLACK W/
MIRROR CUT LIP
15", 17"-20", 22"

SILVER W/ MIRROR
CUT LIP



RAPP

SILVER W/ MIRROR
CUT LIP
17"-20", 22"

GLOSS BLACK
W/ MIRROR
CUT LIP



SPARTAN

ROTARY FORGED
MATTE BLACK
17"-20"

SILVER





BLACK RHINO WHEELS

Black Rhino Truck Wheels are designed with the Off Road Truck and SUV enthusiast in mind.



KRUGER
SILVER W/ MIRROR CUT
FACE
20", 22", 24"

GLOSS BLACK



COLUMBIA
MATTE BLACK
MACHINED FACE &
DARK MATTETINT
22x9.5" (5-127)



LETABA
2 PIECE
GLOSS BLACK W/
CHROME STAINLESS LIP
20", 22", 24"

SILVER W/ BRUSHED FACE &
CHROME STAINLESS LIP



EVEREST
MATTE BLACK
20", 22", 24"

SILVER W/ MIRROR
CUT FACE



MOZAMBIQUE
ROTARY FORGED
SILVER MACHINED
18", 20", 22", 24"

MATTE BLACK



HAKA
SILVER W/ MACHINED
FACE
20", 22"

MATTE BLACK



PEAK
ROTARY FORGED
GLOSS BLACK W/ MACHINE
CUT FACE
20", 22"

MATTE BLACK





PONDORA

GLOSS BLACK W/
MACHINE LIP
20", 22", 24"

SILVER W/ MACHINE
FACE & LIP



TRAVERSE

SILVER W/ MACHINE CUT
FACE
18", 20", 22", 24"

MATTE BLACK



SAVANNAH

2 PIECE
GLOSS BLACK W/
CHROME STAINLESS LIP
20", 22", 24"

SILVER W/ MACHINED
FACE & CHROME
STAINLESS LIP



WARLORD

MATTE GUNMETAL
17", 18", 20", 22"

MATTE BLACK W/
MATTE DARK TINT LIP



SPEAR

SILVER W/ MIRROR
CUT EDGE
20", 22", 24"

MATTE BLACK



TAUPO

MATTE BLACK W/ MATTE
MACHINE FACE
17", 18", 20"

MATTE BLACK W/ MATTE
MACHINE FACE DARK
TINT





Cray Wheels for Corvettes are designed to accept the original equipment wheel center logo cap, and accommodate factory tire pressure monitoring systems.



MANTA
GLOSS BLACK W/ MIRROR CUT LIP
17"-20"



CHROME



SCORPION
GLOSS BLACK W/ MIRROR CUT LIP
17"- 20"



CHROME



BRICKYARD ROTARY FORGED
SILVER W/ MIRROR CUT FACE
18"-20"



MATTE BLACK



HAWK 2 PIECE
SILVER W/ MACHINE FACE &
CHROME STAINLESS LIP
18"-20"



CHROME



SPIDER ROTARY FORGED
MATTE BLACK
18"- 20"



SILVER W/ MIRROR
CUT FACE

Other styles and finishes available, visit our website to view the full line of Cray Wheels.



Coventry Wheels was created with the sole purpose of making bespoke Jaguar wheels. Jaguar cars require a very specific wheel and Coventry has mastered the art of the Jaguar wheel.



WARWICK 2 PIECE
GLOSS BLACK W/ CHROME
STAINLESS LIP
20", 21"



SILVER W/ BRUSHED
FACE & CHROME
STAINLESS LIP



WHITLEY
GLOSS BLACK W/ MIRROR CUT LIP
17"-20"



HYPER SILVER W/
MIRROR CUT LIP

Other styles and finishes available, visit our website to view the full line of Coventry Wheels.

All GFG Forged Modular Wheels are made to order in any custom finish and are available in sizes 19"- 22, 24" and 26".

FM-800



FM-844



FM-855



FM-866



FM-877



FM-888



FM-626



FM-747





GENIUS

Genius wheels are built exclusively for the Smart Fortwo and are offered in 15 inch and 17 inch wheel sizes.



DARWIN
MATTE BLACK
15", 17"

GUNMETAL W/
MIRROR CUT LIP



NEWTON
HYPER SILVER
15", 17"

MATTE BLACK



Other styles and finishes available, visit our website to view the full line of Genius Wheels.

Gianelle
Designs

A Giovanna Wheel Family Brand.



CUBA-10
CHROME
20", 22"

BLACK W/ BALL
CUT DETAILS



BOLOGNA
SILVER
MACHINED FACE
24", 26"

BLACK



CUBA-12
BLACK W/ BALL
CUT DETAILS
24", 26"

CHROME



Other styles and finishes available, visit our website to view the full line of Gianelle Wheels.

Gianellè
Design



DAVALU

BLACK
MACHINED FACE
20", 22"



BLACK



MONACO

BLACK
20", 22"



SILVER
MACHINED FACE



LUCCA

SILVER
MACHINED FACE
20", 22"



BLACK
MACHINED FACE



PARMA

BLACK V/ BALL
CUT DETAILS
20", 22", 24", 26"



PUERTO

BLACK
19", 20", 22"





SANTO-2SS

SILVER MACHINED
FACE CHROME LIP
20", 22", 24"



BLACK
CHROME LIP



TROPEZ

SILVER
MACHINED FACE
20", 22", 24", 26"



BLACK
MACHINED FACE



SANTONEO

BLACK W/ BALL
CUT DETAILS
20", 22", 24"



CHROME



YEREVAN

SILVER MACHINED
FACE CHROME LIP
24", 26"



BLACK



VERDI

BLACK SMOKED
20", 22", 24"



SILVER
MACHINED FACE



Giovanna[®]

WHEELS

Giovanna Wheels aka WTWCorp has expanded to 5 different unique brands: Giovanna Wheels, Gianelle Designs, Koko Kuture, Koko Solid, and GFG Forged modular wheels. A trendsetter in the industry since 1996.



DUBLIN-6
SILVER
MACHINED FACE
24", 26"

BLACK
MACHINED FACE



DUBLIN-5
BLACK
MACHINED FACE
20", 22"

SILVER
MACHINED FACE



AUSTIN
SILVER MACHINED
FACE CHROME LIP
20", 22"

BLACK MACHINED
FACE CHROME LIP



BOGOTA
BLACK
MACHINED FACE
20", 22", 24", 26"

SILVER
MACHINED FACE





DRAMUNO-5

BLACK
MACHINED FACE
20", 22"

SILVER
MACHINED FACE



ESSEX
SILVER MACHINED
FACE CHROME LIP
20", 22"

BLACK
CHROME LIP



DRAMUNO-6

SILVER
MACHINED FACE
24", 26"

BLACK
MACHINED FACE



HALEB
BLACK SMOKE
20", 22", 24", 26"

SILVER
MACHINED FACE



KILIS
BLACK
20", 22"



SHAKI
SILVER
MACHINED FACE
20"

BLACK





Best-in-class premium milling quality via patent pending Precision CNC Milling Process. Best in class chrome quality via Trú Chrome Technology. Highest-grade material with infinite attention to designs and details. Welcome to the next era of unparalleled aesthetics and quality driven luxury. We are Heavy Hitters.



HH10
TRÚ CHROME
22", 24", 26"

ABSOLUTE BLACK /
PRECISION MILLING



HH11
ABSOLUTE BLACK /
PRECISION MILLING
22", 24", 26"

TRÚ CHROME



HH12
TRÚ CHROME
22", 24", 26"

ABSOLUTE BLACK /
PRECISION MILLING



HH15
ABSOLUTE BLACK /
PRECISION MILLING
22", 24", 26"

TRÚ CHROME



A Giovanna Wheel Family Brand.



DAcono

BLACK
MACHINED FACE
24", 26"



SILVER
MACHINED FACE



LE MANS

SILVER
MACHINED FACE
20", 22"



BLACK SMOKED



FUNEN

BLACK SMOKED
20", 22", 24"



SILVER
MACHINED FACE



MASSA-5

SILVER
MACHINED FACE
20", 22"



BLACK
MACHINED FACE



MASSA-7

BLACK
MACHINED FACE
20", 22", 24" 26"



SILVER
MACHINED FACE





SARDINIA
BLACK
24", 26"



SILVER
MACHINED FACE



SARDINIA-6
BLACK
24", 26"



CHROME



SARDINIA-5
CHROME
19", 20" 22"



BLACK



SURREY
BRONZE
20", 22", 24", 26"



SILVER
MACHINED FACE

THE KOKO KUTURE CRAFTSMANSHIP





ARTEMIS
BLACK MACHINED FACE
& LIP GROOVE
22"



BLACK MACHINED
FACE CHROME LIP



CSS-10
BLACK CNC GROOVES
20", 22"



CHROME



CSS-7
BLACK MACHINED TIPS
17", 20", 22"



CHROME
(COVERED LUG CAP)



CSS-15
BLACK MACHINED FACE
20", 22"



BLACK
MACHINED TIPS
(COVERED LUG CAP)



CSS-8
CHROME
20", 22"



BLACK
MACHINED FACE



GRAVITY
BLACK MACHINED FACE
20", 22", 24"



CHROME



HYDRA
BLACK MACHINED
CHROME LIP
22"

BLACK MACHINED FACE
(COVERED LUG CAP)



PEGASUS
CHROME
20", 22"

BLACK MACHINED FACE



INVICTUS-Z
BLACK MACHINED
CHROME LIP
20", 22", 24"

BLACK CENTER
CHROME LIP



POLARIS
BLACK MACHINED FACE &
LIP GROOVE
20", 22"

BLACK MACHINED
CHROME LIP



JOHNSON II
BLACK MACHINED FACE
20", 22", 24", 26"

CHROME



R-3
CHROME
19"

BLACK MACHINED FACE



LUST
CHROME
17", 18", 20", 22", 24", 26"

BLACK MACHINED FACE



R-4
BLACK MACHINED FACE
20", 22"

CHROME
(COVERED LUG CAP)





R-5
BLACK MACHINED
CHROME LIP
18", 20", 22"

BLACK MACHINED
FACE & LIP GROOVE



R-17
BLACK CNC GROOVES
CHROME LIP
22"

BLACK MACHINED
CHROME LIP



R-6
BLACK MACHINED FACE
20", 22", 24"

CHROME



WRAITH
BLACK MACHINED TIPS
18", 20", 22"

CHROME



R-12
BLACK MACHINED
CHROME LIP
20", 22"

BLACK MACHINED TIPS
CHROME LIP



R-14
BLACK MACHINED
CHROME LIP
20", 22"

BLACK MACHINED FACE



MANDRUS

Mandrus takes Mercedes excellence seriously. It sets the standard we feel we must meet or exceed with each new light alloy aftermarket Mercedes wheel we introduce. We know that Mercedes owners are uncompromising. We like that because it challenges us to do our best.



ESTRELLA
MATTE BLACK W/
MACHINE LIP EDGE
17"-20"

GUNMETAL W/ MIRROR
CUT FACE



ARROW
ROTARY FORGED
MATTE BLACK
17"-20"

GUNMETAL W/ MIRROR
CUT FACE



MANNHEIM
GUNMETAL W/ MIRROR
CUT FACE & LIP
17"-20", 22"

CHROME



ATLAS
GUNMETAL W/ MIRROR
CUT FACE
17"-20", 22"

MATTE BLACK



MILLENNIUM
HYPER SILVER W/ MIRROR
CUT LIP
17"-20", 22"

GLOSS BLACK W/
MIRROR CUT LIP



ATLAS 6
FOR SPRINTER VAN
MATTE BLACK
16"-18"

GUNMETAL W/
MIRROR CUT FACE



ROTEC
SILVER W/ MIRROR
CUT FACE
17"-20", 22"

MATTE BLACK





SIMPLEX
2 PIECE
GUNMETAL W/ MACHINE
FACE & CHROME LIP
18"-22"



MATTE BLACK W/
GLOSS BLACK LIP



WILHELM
SILVER W/ MIRROR CUT
FACE & LIP
17"-20", 22"



CHROME

Other styles and finishes available, visit our website to view the full line of Mandrus Wheels.



M105
BLACK MACHINED FACE W/
GROOVE LIP
18", 20", 22", 24", 26"



CHROME



M117
SATIN BLACK TINT
20", 22", 24"



CHROME



M116
SATIN BLACK
18", 20", 22"



SATIN GRAY
MACHINED FACE



M118
GLOSS BLACK MACHINED
18", 20", 22", 24"



CHROME

REDBOURNE

Luxury wheels by Redbourne, engineered exclusively to fit Land Rover vehicles



MANOR
SILVER W/ MACHINE FACE
20", 22"

GLOSS BLACK



DOMINUS
MATTE BLACK
20", 22"

SILVER W/ MIRROR
CUT FACE



MARQUES
GLOSS BLACK W/ MIRROR
CUT LIP
20", 22"

CHROME



HAMPSHIRE
2 PIECE
SILVER W/ MACHINE FACE
& CHROME LIP
20", 22"

MATTE BLACK W/ GLOSS
BLACK LIP



NOBLE
DIRECTIONAL
GLOSS TITANIUM W/
GLOSS BLACK FACE
20", 22"

MATTE BLACK



HERCULES
GLOSS GUNMETAL
20", 22"

SILVER W/ MIRROR
CUT FACE



NOTTINGHAM
MATTE BLACK
20", 22"

CHROME



RSR

ROAD+STREET+RACE

RSR offers - Road series wheels for big brake upgrades. Street series wheels an upgrade in both lifestyle and design. Race series wheels a higher technology design.



R701
GLOSS BLACK MACHINED
17"-20"



SILVER MACHINED



R703
WET GRAPHITE
20", 21"



SILVER



R704
GLOSS BLACK
17"-20", 22"



SILVER MACHINED



R702
SILVER MACHINED
17"-20"



GLOSS BLACK
MACHINED



R801 FLOW FORM
GRAPHITE
20"



HYPER BLACK



R802 FLOW FORM
HYPER BLACK
20"



GRAPHITE



R803 FLOW FORM
MACHINED GRAPHITE
22"



SILVER MACHINED

RSR
RACE SERIES

RSR forged wheels are produced by applying eight thousand times heavier pressure than casting. This process prevents porosity inside the material and creates homogenous metal structure at the molecular level, helping the material achieve high rigidity and strength. The characteristics obtained by the process allows maximum milling capacity and enables to reduce weight dramatically.

R980
FOR CENTER LOCK PORSCHE ONLY
19"x9", 19"x12"

RED



BLACK



BLUE



OTHER CUSTOM FINISHES:

NEON GREEN



WHITE



GOLD



GRAY



SILVER



SAVINI

THE **GOLD** STANDARD

The Black di Forza lines are one of Savini's simplest and more essential products for everyday use. With more affordable pricing and an array of fitment options this has become a very popular choice.



BM9
GRAY
19", 20", 22"



MACHINED SILVER



BM12
BRUSHED SILVER
19", 20", 22"



MATTE BLACK



BM10
TITANIUM
19", 20", 22"



MATTE BLACK



BM13
MATTE BLACK
19", 20", 22"



BRUSHED SILVER



BM11
MACHINED BLACK
19", 20", 22"



BRUSHED SILVER



BM14
MACHINED BLACK
19", 20", 22"



GLOSS BLACK



Nothing sets your car or SUV apart like a new set of distinctive custom wheels from TSW. Make a bold statement by choosing just the right design, finish and size from our collection of light alloy aftermarket wheels. You'll discover that our wheels are as remarkable for their uncompromised quality, precision engineering, advanced materials and revolutionary manufacturing processes as they are for their stunning designs.

It's more than a philosophy. It's more than a carefully scripted mission statement. It is who we are as people. It's what we believe in. It's what motivates us. It's our sense of wrong and right.



BATHURST ROTARY FORGED
SILVER W/ MIRROR CUT FACE
17"-20"



GLOSS GUNMETAL



AMAROO 2 PIECE
SILVER W/ BRUSHED FACE
& CHROME LIP
18"- 20"



MATTE BLACK



BROOKLANDS
MATTE BLACK
17"- 20"



SILVER W/ MIRROR CUT FACE



ASCENT
MATTE GUNMETAL W/
GLOSS BLACK FACE
17"- 20"



MATTE TITANIUM SILVER



BRISTOL
SILVER W/ MIRROR CUT FACE
17"-20", 22"



MATTE BLACK



CAMBER

MATTE GUNMETAL W/ MATTE MACHINE FACE & GUNMETAL LIP
17"- 20"

SILVER W/ MIRROR FACE & LIP



GENEVA ROTARY FORGED
MATTE TITANIUM SILVER
17"- 20"

MATTE GUNMETAL



CHICANE

GLOSS BLACK W/ MIRROR CUT FACE
17"-20"

MATTE GUNMETAL



HOLESHOT ROTARY FORGED
MATTE TITANIUM SILVER W/
MATTE MACHINE FACE
17"- 20"

MATTE GUNMETAL



CROWTHORNE

MATTE GUNMETAL W/
MATTE MACHINE FACE
17"- 20"

MATTE BLACK



JARAMA

CHROME
17"- 20", 22"

GLOSS BLACK W/ MIRROR CUT LIP



DONINGTON

MATTE BLACK
17"- 20"

GUNMETAL W/ MACHINED CUT FACE & GUNMETAL STRIPE



JEREZ 2 PIECE

MATTE BLACK W/ CHROME STAINLESS STEEL LIP
18"- 20"
SILVER W/ MACHINE FACE & CHROME STAINLESS LIP



GATSBY

SILVER W/ MIRROR CUT FACE
17"- 20"

MATTE BLACK



MALLORY 5

SILVER W/ MIRROR CUT FACE
16"- 20"

MATTE BLACK





MECHANICA ROTARY FORGED
MATTE GUNMETAL W/ MATTE
BLACK FACE
17"- 20"

SILVER W/ MIRROR CUT FACE



PORTIER 2 PIECE
SILVER W/ BRUSHED FACE
& CHROME STAINLESS LIP
18"-20"
MATTE GUNMETAL W/
GLOSS BLACK LIP



MIRABEAU 2 PIECE
SILVER W/ MACHINE FACE &
CHROME STAINLESS LIP
18"- 20", 22"

MATTE BLACK



RASCASSE 2 PIECE
MATTE GUNMETAL W/ GLOSS BLACK LIP
18"-21"

SILVER W/ MACHINE FACE
& CHROME STAINLESS LIP



MONACO 2 PIECE
SILVER W/ BRUSHED FACE
& CHROME STAINLESS LIP
18"- 22"

MATTE BLACK W/ GLOSS BLACK LIP



REGIS
MATTE BLACK
17"- 22"

GUNMETAL W/
MIRROR CUT FACE



NOUVELLE 2 PIECE
SILVER W/ BRUSHED FACE
& CHROME STAINLESS LIP
18"-20"

GLOSS BLACK W/ CHROME
STAINLESS LIP



RIFLE ROTARY FORGED
MATTE GUNMETAL
15"- 18"



NURBURGRING ROTARY FORGED
MATTE BRONZE
17"- 22"

GUNMETAL W/ MIRROR
CUT FACE



RIVAGE
GLOSS BLACK W/ MILLED
SPOKES
17"- 20"

HYPER SILVER





ROUEN 2 PIECE
SILVER W/ BRUSHED FACE
& CHROME STAINLESS LIP
18"- 20", 22"



MATTE BLACK



TREMBLANT
GLOSS BLACK W/ MIRROR CUT LIP
17"- 20"



MATTE BLACK



ROUGE
GUNMETAL / MIRROR
CUT FACE
17"- 20"



VALE
SILVER W/ MIRROR CUT FACE
17"- 20"



MATTE BLACK W/
GLOSS BLACK FACE



SILVERSTONE
SILVER W/ MIRROR CUT FACE & LIP
17"- 20", 22"



GLOSS BLACK W/
MIRROR CUT LIP



VALENCIA
GLOSS BLACK W/ MIRROR CUT LIP
17"- 20"



SILVER W/ MIRROR CUT LIP



SOCHI ROTARY FORGED
MATTE BLACK
18"- 20"



GUNMETAL W/
MIRROR CUT FACE



STOWE
HYPER SILVER W/ MIRROR CUT LIP
17"- 20"



GLOSS BLACK W/
MIRROR CUT LIP





Aftermarket wheels by Victor Equipment, engineered exclusively to fit Porsche vehicles.



INNSBRUCK
ROTARY FORGED
SILVER W/ MIRROR
CUT FACE
18" - 20", 22"

MATTE BLACK



BADEN
ROTARY FORGED
MATTE BLACK
18" - 22"

SILVER W/ MIRROR
CUT FACE



LEMANS
GLOSS BLACK W/ MIRROR
CUT LIP
18" - 20", 22"

HYPER SILVER W/
MIRROR CUT LIP



ENDURANCE
ROTARY FORGED
MATTE BLACK W/
MILLED SPOKES
18" - 22"

SILVER W/ MIRROR CUT
FACE & MILLED SPOKES



TURISMO
HYPER SILVER W/ MIRROR
CUT LIP
18" - 20", 22"

GLOSS BLACK W/
MIRROR CUT LIP



KRONEN
2 PIECE
SILVER W/ BRUSHED FACE
& CHROME LIP
18" - 20", 22"

MATTE BLACK



ZEHN
MATTE BLACK
18" - 20", 22"

HYPER SILVER





Vorsteiner is a global leader in automotive Forged and Flow Forged wheel development and for sports and luxury vehicles. We create the most advanced, innovative, and distinct products in the marketplace to meet the demands of the most discerning clientele.



V-FF 101
FLOW FORGED
CARBON GRAPHITE
20"

MERCURY SILVER



V-FF 104
FLOW FORGED
MYSTIC BLACK
20"

MERCURY SILVER



V-FF 102
FLOW FORGED
MERCURY SILVER
20"

CARBON GRAPHITE



V-FF 105
FLOW FORGED
PATINA BRONZE
20"

CARBON GRAPHITE



V-FF 103
FLOW FORGED
CARBON GRAPHITE
19"-21"

MERCURY SILVER



V-FF 106
FLOW FORGED
MERCURY SILVER
(WITH OPTIONAL RED CAP)
19"

CARBON GRAPHITE



VOSSEN

Established with the intent to provide a superior product, today Vossen holds a position as one of the trend-setting brands in the industry. Our passion, much like our commitment to excellence, extends into every facet of what we do. From engineering to design and manufacturing, Vossen is redefining the landscape of modern wheel craftsmanship. With three decades of experience and a distribution network of over 36 countries across the world, our customers have come to expect nothing less than sheer quality and innovation.

CV SERIES

MONOBLOCK

Pioneer of the concave, staggered trend, the CV Series employs a low-pressure casting process and delivers classic monoblock designs.



CV3-R
CAST
METALLIC GLOSS SILVER
19", 20", 22"



GLOSS GRAPHITE



CVT
CAST (DIRECTIONAL)
GLOSS GRAPHITE
19", 20", 22"



METALLIC GLOSS SILVER



VOSSSEN

VF/SERIES

Advancing the traditional casting process, the VF Series utilizes flow forming to cut down on weight and increase strength. Flow forming also allows for a great range of wheel widths within each design.



VFS-4
FLOW FORM
GLOSS GRAPHITE
20", 22"

SILVER METALLIC



VFS-1
FLOW FORM
SILVER BRUSHED
20", 22"

MATTE GRAPHITE



VFS-5
FLOW FORM
SILVER METALLIC
20", 22"

GLOSS GRAPHITE



VFS-2
FLOW FORM
SATIN BRONZE
20", 22"

SILVER POLISHED



VFS-6
FLOW FORM
GLOSS GRAPHITE
20", 22"

SILVER METALLIC



VFS-10
FLOW FORM
SILVER METALLIC
20", 22"

GLOSS GRAPHITE



VOSSEN FORGED: PRECISION SERIES

The flagship of Vossen Forged, the Precision Series is distinguished by signature 30-degree cut angles combined with the perfect lip-to-barrel transition of the Infini-Lip. Available in sizes 19"-22". 24" coming soon.

VPS-301



VPS-302



VPS-302T



VPS-303



VPS-304



VPS-305T



VPS-306



VPS-307



VPS-307T



VPS-308



VPS-310



VPS-310T



VPS-312**VPS-313T****VPS-314****VPS-314T****VPS-315****VPS-315T****VPS-316****VPS-317****VPS-318**

AVAILABLE FINISHES

Vossen Forged wheels are offered in solid colors as a standard option. Solid colors vary in shade and smoothness, including gloss, matte, satin, and textured options.

Vossen Forged wheels that have been hand polished and/or brushed are finished using transparent powder coats, letting the hand finishing show through any variety of shades.

Visit Forged.VossenWheels.com/Finishing for more info.

SOLID COLORS

**DENIM BLUE****GLOSS GUNMETAL****SATIN BRONZE****ULTRAVIOLET**

TRANSPARENT COLORS

**VOSSEN RED****COPPER PENNY****DECO TEAL****HONEY COMB**

VOSSEN FORGED: LC SERIES

The Lip Concept Series is aimed at emulating the lip transition of a multi-piece wheel while maintaining a single-piece monoblock forged construction. Available in sizes 19"-22". 24" coming soon.

LC-101



LC-102



LC-103



LC-104



LC-106T



LC-105T



LC-107



AVAILABLE FINISHES

Vossen Forged wheels are offered in solid colors as a standard option. Solid colors vary in shade and smoothness, including gloss, matte, satin, and textured options.

Vossen Forged wheels that have been hand polished and/or brushed are finished using transparent powder coats, letting the hand finishing show through any variety of shades.

Visit Forged.VossenWheels.com/Finishing for more info.

SOLID COLORS



DENIM BLUE



GLOSS GUNMETAL



SATIN BRONZE



ULTRAVIOLET

TRANSPARENT COLORS



VOSSEN RED



COPPER PENNY



DECO TEAL



HONEY COMB

VOSSEN FORGED: CG SERIES

The CG Series is defined by the Closed Geometry and elegantly-confined patterns created by the monoblock spoke designs. Available in sizes 19"-22". 24" coming soon.

CG-201



CG-202



CG-203



CG-204



CG-205



LC-104



VOSSEN/WORK

Introducing the new Vossen x Work series. These 2-piece wheels are designed by Vossen in the USA, and manufactured by Work Wheels in Japan. A variety of custom anodized finishes are available. Available in sizes 19" and 20".

2 PIECE

VWS-1



VWS-2



VWS-3





Unique and modernistic trendsetter, yet classic and elegant conservative with a touch of renaissance luxury, 2Crave encompasses and praises beauties of everyday life and individuals within. 2Crave's effortless style, seamless craftsmanship, and unsurpassed visual refinement bring values that only the finest can offer.



NX-4
CHROME
20x9"

SATIN BLACK



NX-1
SATIN BLACK
18x9"
20x10"

CHROME



NX-5
SATIN BLACK
MACHINED FACE
18x9"
20x9"

CHROME



NX-2
SATIN BLACK
17x8"
18x9"
20x9"

CHROME



NX-6
SATIN BLACK
MILL MACHINED
18x9"
20x9"

CHROME



NX-3
SATIN BLACK
MACHINED FACE
17x9"
18x9"
20x9"

CHROME



NX-7
GLOSS BLACK
MACHINED FACE
18x9"
20x9"

CHROME





BLACK RHINO
WHEELS

Black Rhino Truck Wheels are designed with the Off Road Truck and SUV enthusiast in mind



IMPERIAL

SILVER W/
MACHINED FACE
17x9"
18x9"
20x9"

MATTE BLACK



LUCERNE

SILVER W/
MACHINED FACE
17x9"
18x9"
20x9"

MATTE BLACK



MADNESS

DARK TINT MACHINE
FACE W/ MATTE BLACK
LIP
17x9"
18x9"
20x9"



MINT

GLOSS GRAPHITE
17x9"
18x9"
20x9"
20x10"

MATTE BLACK



500

MATTE BLACK
W/ MACHINE LIP
17x9.5"
18x10"
20x10"



EL CAJON

MATTE BLACK
17x9"
18x9"
20x9"
20x10"



HAMMER

MATTE BLACK
17x9"
18x9"
20x9"
20x12"

Other styles and finishes available, visit our website to view the full line of Black Rhino Off Road Wheels.

OFF ROAD



MOAB
GLOSS BLACK W/
MACHINE LIP
17x9"
18x9"
20x9"

MATTE BLACK



ROCKWELL
GLOSS BLACK W/
MACHINE LIP
17x9"
18x9"
20x9"

MATTE BLACK



MOJAVE
MATTE BLACK
17x9"
18x9"
20x9"



SELKIRK
GLOSS BLACK MILLED
17x9"
18x9"
20x9"
20x10"



REVOLUTION
MATTE BLACK W/ MATTE
MACHINE LIP EDGE
17x9"
18x9"
20x9"
20x10"

MATTE BLACK





SIDEWINDER

MATTE BLACK

17x9"

18x9"

20x9"



SIERRA

GLOSS BLACK MILLED

17x9"

18x9"

20x9"

20x10"



TANAY

SILVER W/ MACHINE FACE

17x9"

18x9"

20x9"

20x10"

MATTE BLACK W/
DARK MATTE TINT



TAUPO

MATTE BLACK W/ MATTE
MACHINE FACE

17x9"

18x8"

18x9"

20x9"

20x10"

MATTE BLACK W/
DARK MATTE TINT



WARLORD

MATTE BLACK W/ MATTE
DARK TINT LIP

17x8"

17x9"

18x8"

18x9"

20x9"

20x10"

MATTE GUNMETAL





Hostile Wheels has been individualizing Off-Road vehicles since 2012. At Hostile Wheels everything revolves around aggressive off-road lifestyle from our latest design to our technical research to make every optical modification to your vehicle the very best. Combining high-tech design and manufacturing we build truly unique wheels at the highest quality.



EXILE-6

IRON CUT	LIP SIZE
20x9"	2.0"
20x10"	3.7"
20x12"	5.2"
20x14"	7.3"
22x10"	3.5"
22x14"	7.3"

BLADE CUT



HAMMERED-6

ARMOR PLATE	LIP SIZE
20x9"	3.3"
20x10"	4.4"
20x12"	6.0"
22x12"	6.3"

BLADE CUT



GAUNTLET-8

ASPHALT	LIP SIZE
20x9"	2.2"
20x10"	3.7"
20x12"	5.2"
22x10"	3.7"
22x14"	7.2"

ARMOR PLATE



HAVOC-6

ARMOR PLATE	LIP SIZE
18x9"	2.3"
20x9"	2.4"
20x10"	3.9"
20x12"	5.3"

BLADE CUT



HAVOC-8

BLADE CUT	LIP SIZE
18x9"	2.3"
20x9"	2.4"
20x10"	3.9"
20x12"	5.3"
22x14"	6.1"

CHROME





KNUCKLES-6

ARMOR PLATE	LIP SIZE
20x9"	3.1"
20x10"	4.6"
20x12"	6.4"

BLADE CUT



KNUCKLES-8

ASPHALT	LIP SIZE
20x12"	6.4"
22x14"	7.7"

CHROME



SWITCHBLADE

ARMOR PLATE	LIP SIZE
20x9"	2.0"
20x10"	3.7"
20x12"	5.2"
20x14"	7.3"
22x10"	3.7"
22x12"	5.2"
22x14"	7.3"

BLADE CUT



MOAB-6

BLADE CUT	LIP SIZE
17x9"	2.4"
20x10"	3.1"

ASPHALT



ZOMBIE-6

ARMOR PLATE	LIP SIZE
20x9"	2.6"
20x10"	4.3"
20x12"	6.2"

BLADE CUT



SPROCKET-8

ASPHALT	LIP SIZE
20x9"	2.2"
20x10"	3.7"
20x12"	5.2"
22x12"	5.2"
24x14"	7.2"

ARMOR PLATE





A Giovanna Wheel Family Brand.

Koko Solid 1-Piece Wheels



ARMOR
BLACK W/ BALL
CUT DETAILS
20x9"
20x10"
22x10"

BLACK
MACHINED FACE



FORCE
BLACK W/ BALL
CUT DETAILS
20x9"
20x10"
22x10"

BLACK
MACHINED FACE



STORM
BLACK
MACHINED FACE
20x9"
20x10"
22x10"

BLACK W/ BALL
CUT DETAILS



Koko Solid 2-Piece Wheels

Koko Solid 2-Piece Wheels are available in any custom finish. Sizes include 20x9", 20x10", and 22x10".

S-5



S-5V



S-7



S-8



S-10





M93
MATTE ANTHRACITE
17x9"
18x9"
20x9"

SATIN BLACK



M94
SATIN BLACK
MACHINED EDGE
17x9"
18x9"
20x9"

ANTHRACITE
MACHINED EDGE



M95
SATIN BLACK
18x9"
20x9"

GLOSS BLACK
MACHINED FACE



M91
GLOSS BLACK
MACHINED FACE
17x9"
18x9"
20x9"

CHROME



M92
SATIN BLACK
MACHINED FACE
17x9"
18x9"
20x9"

CHROME





85R VOLTAGE

GLOSS BLACK W/
CNC ACCENTS
17x9"
18x9"
20x9"
20x10"



67R AK-8

GLOSS BLACK
MACHINED FACE
20x9"

GLOSS BLACK



86R TACTICAL

GLOSS BLACK W/
CNC ACCENTS &
OPTIONAL BEADRING
18x9"
20x9"

GLOSS BLACK W/ CNC
ACCENTS



78R UZI

CHROME
20x9"

GLOSS BLACK W/
CNC ACCENTS



87R BLADE

CHROME
24x12"

GLOSS BLACK W/
CNC ACCENTS



79R ASSAULT

GLOSS BLACK
20x10"

CHROME





89R ASSASSIN

GLOSS BLACK W/
CNC ACCENTS
18x9"
20x9"
20x10"
20x12"
22x12"



90R COLT

GLOSS BLACK W/
CNC ACCENTS
20x10"
22x12"

CHROME



96R

GLOSS BLACK
MACHINED FACE
22x9.5"
18x9"
20x9"
20x10"

GLOSS BLACK W/
CNC ACCENTS



94R

CHROME W/ BLACK INSERTS
17x9"
18x9"
20x9"
20x10"
22x10"

BLACK W/
CHROME INSERTS



98R

GLOSS BLACK W/
CNC ACCENTS
20x9"

CHROME



99R FURY

GLOSS BLACK W/
CNC ACCENTS
20x9"
20x10"



Remington®

You probably know the driver's obsession for finding the off-road wheels that are just the right ones. With Remington wheels, you don't need to look further. If you are ready to take the call of the wild hunter inside you, these rugged wheels will drive you down the least traveled roads. These styles are available for trucks, ATV, golf carts and trailers.



BUCKSHOT

SATIN BLACK MACHINED
FACE
17x9"
20x9"
20x10"
22x11"

CHROME



HOLLOW POINT

SATIN BLACK MACHINED
17x9"
18x9"
20x9"

SATIN BLACK



GRAVEL

SATIN BLACK MILLED
17x9"
18x9"

SATIN BLACK



RTC

SATIN OD GREEN
17x9"
18x9"

SATIN DESERT TAN



HIGH COUNTRY

CHROME
18x9"
20x9"

SATIN BLACK MACHINED



TARGET

SATIN BLACK MACHINED
17x9"
18x9"

SATIN OD GREEN





8 POINT
SATIN BLACK MACHINED
FACE
20x9"



CHROME



TROPHY
GLOSS BLACK MACHINED
18x9"
20x9"



SATIN BLACK

Remington.

WHEELS FOR THE **TRUE
OUTDOORSMAN**



CENTERFIRE LUG NUT



POLISHED 4" EXHAUST TIP



REMINGTON COUNTRY BULL BAR



Other styles and finishes available, visit our website
to view the full line of Remington Wheels.

OFF ROAD



At SOTA Offroad we celebrate the innovation that has made us the original pioneer of the black & milled look in the wheel market today. We hold ourselves to our own standards of excellence and are excited to share our passion with everyone in the lifted and leveled truck market. Spoke design may change depending on lug pattern.



D.R.T.
STEALTH
17x18.5"
20x9"
20x10"



A.W.O.L.
ANTHRA-KOTE MACHINED
20x9"
20x10"
20x12"
22x10.5"
22x12"

POLISHED



F.I.T.E.
DEATH METAL
20x9"
20x10"

STEALTH



B.A.T.L.
DEATH METAL
20x9"
20x10"

STEALTH



NOVAKANE
DEATH METAL
17x9"
18x9"
20x9"
20x10"
22x9.5"
22x10.5"

STEALTH



BRAWL
DEATH METAL
20x9"
20x10"
20x12"
22x10.5"
22x12"

POLISHED





M-80
DEATH METAL
17x9"
20x10"
24x10.5"

STEALTH



S.C.A.R.
DEATH METAL
20x9"
20x10"

STEALTH



REHAB
DEATH METAL
20x9"
20x10"
22x10.5"

STEALTH



S.K.U.L.
DEATH METAL
20x9"
20x10"
22x10.5"
24x10.5"

STEALTH



R.E.P.R.
DEATH METAL
20x9"
20x10"

STEALTH



S.S.D.
STEALTH
17x8.5"
20x9"
20x10"



DELINTE



DH2
PASSENGER
ALL SEASON
14"-18"



DH7
LIGHT TRUCK / SUV
ALL SEASON
16"-18"



THUNDER D7
PASSENGER
ULTRA HIGH PERFORMANCE
17"-20", 22"



DESERT STORM D8
LIGHT TRUCK / SUV
SPORT / STREET TRUCK
20", 22", 24", 26", 28", 30"



DX-9 BANDIT M/T
LIGHT TRUCK / SUV
OFF ROAD
15", 17", 18", 20"



DX-10 BANDIT A/T
LIGHT TRUCK / SUV
ON/OFF ROAD
15"-18", 20"



DX-11 BANDIT H/T
LIGHT TRUCK / SUV
SPORT / STREET TRUCK
16"-18", 20"

FALKEN TIRE



AZENIS FK450 A/S
PASSENGER
ULTRA HIGH PERFORMANCE
16"-20"



AZENIS FK453
PASSENGER
ULTRA HIGH PERFORMANCE
17"-20", 22"



AZENIS FK453CC
LIGHT TRUCK / SUV
SPORT/STREET TRUCK
17"-20"



SINCERA SN250 A/S
PASSENGER
PERFORMANCE TOURING
14"-18"



ZIEX ZE950 A/S
PASSENGER
HIGH PERFORMANCE
15"-20"



WILDPEAK H/T
LIGHT TRUCK / SUV
ALL SEASON
15"-18", 20"



WILDPEAK M/T
LIGHT TRUCK / SUV
OFF ROAD
15"-18", 20"



WILDPEAK A/T3W
LIGHT TRUCK / SUV
ON / OFF ROAD
15"-18", 20"



WILDPEAK A/T
LIGHT TRUCK / SUV
ON / OFF ROAD
15"-18", 20", 22", 24"



ZIEX S/TZ05
LIGHT TRUCK / SUV
SPORT / STREET TRUCK
16"-20", 22", 24"



VOCE UHP

PASSENGER
ULTRA HIGH PERFORMANCE
17"-20", 22", 24", 26"



ST5000

LIGHT TRUCK / SUV
ALL SEASON
15"-18", 20", 22", 24", 26"



FP7000

PASSENGER
HIGH PERFORMANCE
ALL SEASON
14"-19"



FP8000

PASSENGER
ULTRA HIGH PERFORMANCE
18"-20", 22"



P ZERO

PASSENGER
MAX PERFORMANCE
SUMMER
17"-22"



PZERO NERO GT

PASSENGER
MAX PERFORMANCE
SUMMER
17"-22"



SCORPION ZERO ASIMMETRICO

SPORT / STREET TRUCK
ALL SEASON
17"-26"



SCORPION VERDE A/S PLUS

CUV / SUV TOURING
ALL SEASON
19"-22"



ULTRAC SESSANTA

PASSENGER
ULTRA HIGH PERFORMANCE
SUMMER
17"-22", 24"



ULTRAC VORTI

PASSENGER
ULTRA HIGH PERFORMANCE
SUMMER
17"-22"



ULTRAC VORTI R

PASSENGER
MAX PERFORMANCE
SUMMER
19"-21"

OTHER BRANDS AVAILABLE



TPMS



Hub

Sensors



SCHRADER
PERFORMANCE SENSORS

Sensor Valves



VDO

Service Kits



Diagnostic Tools

Wheel Hardware



Wrenches and Lug Adaptors



Black and
Chrome Bolts



Hub Rings



Chrome Lugs

Wheel Spacers



tpr
Driven By Passion



Black Lugs

Bimecc



Suspension



Sway Bars



Coil Overs

H&R

Sway Bar
Bushings



Sport and
Race Springs

Leveling and
Lift Kits



Aerodynamics

BRABUS



Lorinser



WALD

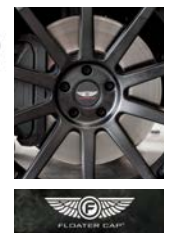


Floater Caps



It Rotates!

Can be Configured
with Any Custom Logo



Custom Grills

LEXANI



RBP



Increase Throttle Response

PedalBox
MAXIMUM RESPONSE



Exhaust Tips

Remington



RBP

Battery Chargers



CTEK
MAXIMIZING BATTERY PERFORMANCE

ContiComfortKit

Continental



Mobility Kit When No Spare is Available



What is Chrome Exchange?

We provide you with a set of chrome plated, original equipment factory alloy wheels and you return the “TAKE-OFF” silver alloy wheels to us. Since it's an exchange, you only pay for the chrome plating! Terms and conditions apply.*

Chrome plating is also available on most Multi-Piece wheels. Please call for details and pricing.

Chroming your O.E. wheels involves a 6 step process:

1. O.E. painted wheel gets stripped down to bare aluminum then polished by hand to fix all the imperfections.
2. The next step will be a nickel plating bath. Nickel bath adds a strong coating that protects against corrosion.
3. Then the Copper plating bath will be done to ensure that the coating provides a deep luster to the wheel and smoothes out all imperfections.
4. The wheel will now be hand polished to generate a deep luster; this procedure is called Copper polishing.
5. Bright nickel plating bath. This step prepares the wheel for chrome.
6. Chrome plating bath.

When purchasing the chrome plating on an Original Equipment wheel from us keep in mind that your original wheels on your vehicle can not have damage. This includes scuffing, scrapes, or bends. If your wheel cores have any damage that need repair, you will be charged for the repair cost. Minor cosmetic damage to the wheel may be taken out during the polishing process. This is to be determined by WSI at the time of core return or we suggest consulting with one of our salesman prior to installing the new wheels to ensure that your wheels are ready for the exchange and don't need any repairs done. Wheels carry a one year limited warranty from the original date of sale. See page 64 for more details.

*Terms and Conditions

Customer understands that when purchasing original equipment wheels and/or accessories for chrome exchange from Wheel Specialists, Inc., the “cores” will be due. Cores need to be returned to Wheel Specialists, Inc. within 15 days of date of sale. Customer will be responsible for replacement costs of cores that are not returned within 30 days of the date of sale. Cores are to be returned at the customer's expense. Wheel Specialists, Inc. is not responsible for shipping charges related to returning cores owed to them. Cores must be the EXACT same part that was given to the customer in chrome, but in the original factory finish. Cores must also be free of any damage or defects. Customer will be responsible for any costs incurred to repair or replace cores returned that aren't in usable condition. Any chrome parts returned as cores are subject to an additional stripping charge, and may be rejected depending on their condition. Wheel Specialists, Inc. cannot be responsible for the condition of customers' parts given to them for chrome plating. It is the customer's responsibility to inspect their parts prior to shipping to determine their condition.

What is PVD Chrome?

PVD is the abbreviation of Physical Vapor Deposition. It is a process carried out in high vacuum at temperatures between 150 and 500 degrees C.

PVD Chrome is the new modern way of Chroming OEM or Aftermarket wheels. Available in three finishes PVD Chrome, PVD Black Chrome, and PVD Midnight Chrome.

PVD Chrome is an OEM tested, approved and patented chrome process that far outlasts other finishes. Unlike traditional chromed or polished aluminum, PVD will not oxidize, fade or discolor, it cleans easily and comes with a five-year limited warranty.



PVD BLACK CHROME

PVD CHROME

PVD MIDNIGHT CHROME

Shown with OEM Lexus center cap

Powdercoating

Powdercoat is a durable finish that is electrostatically applied and then baked to create a smooth finish. We offer powdercoating in a variety of colors in matte and gloss finishes. Powdercoating carries a one-year limited warranty.



SATIN BLACK



GLOSS BLACK

Shown with OEM BMW center cap

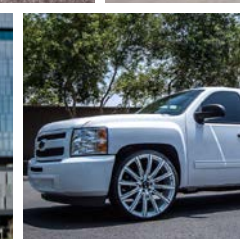
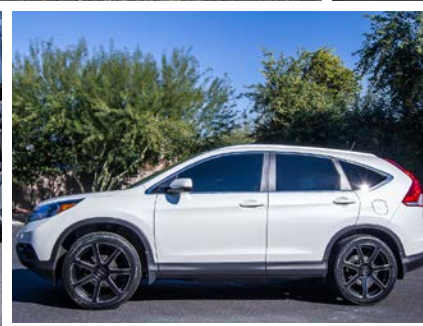
VEHICLE GALLERY

Visit our website to view our full gallery of vehicle photos.









WHEEL SPECIFICATIONS

OFFSET CONVERSION CHART MM OFFSET TO BACKSPACE IN INCHES

BACKSPACE	3.25"	3.5"	3.75"	4"	4.25"	4.5"	4.75"	5"	5.25"	5.5"	5.75"	6"	6.25"	6.5"	6.75"	7"	7.25"	7.5"	7.75"	8"	8.25"	8.5"	8.75"	9"	9.25"	9.5"
WHEEL WIDTH																										
5"	6	12	19	25	32	38	44	51	57	63	69	76														
5.5"	0	6	12	19	25	32	38	44	51	57	63	69	76													
6"	-6	0	6	12	19	25	32	38	44	51	57	63	69	76												
6.5"	-12	-6	0	6	12	19	25	32	38	44	51	57	63	69	76											
7"	-19	-12	-6	0	6	12	19	25	32	38	44	51	57	63	69	76										
7.5"	-25	-19	-12	-6	0	6	12	19	25	32	38	44	51	57	63	69	76									
8"	-32	-25	-19	-12	-6	0	6	12	19	25	32	38	44	51	57	63	69	76								
8.5"	-38	-32	-25	-19	-12	-6	0	6	12	19	25	32	38	44	51	57	63	69	76							
9"	-44	-38	-32	-25	-19	-12	-6	0	6	12	19	25	32	38	44	51	57	63	69	76						
9.5"	-51	-44	-38	-32	-25	-19	-12	-6	0	6	12	19	25	32	38	44	51	57	63	69	76					
10"	-57	-51	-44	-38	-32	-25	-19	-12	-6	0	6	12	19	25	32	38	44	51	57	63	69	76				
10.5"	-63	-57	-51	-44	-38	-32	-25	-19	-12	-6	0	6	12	19	25	32	38	44	51	57	63	69	76			
11"	-69	-63	-57	-51	-44	-38	-32	-25	-19	-12	-6	0	6	12	19	25	32	38	44	51	57	63	69	76		
11.5"	-75	-69	-63	-57	-51	-44	-38	-32	-25	-19	-12	-6	0	6	12	19	25	32	38	44	51	57	63	69	76	
12"	-81	-75	-69	-63	-57	-51	-44	-38	-32	-25	-19	-12	-6	0	6	12	19	25	32	38	44	51	57	63	69	76

SPECIFICATION TERMS

BACKSPACE (OR REAR SPACING): THE DISTANCE FROM THE EXTREME BACK EDGE OF THE RIM TO THE MOUNTING SURFACE.

OFFSET: THE DISTANCE FROM THE CENTERLINE OF THE WHEEL TO THE FACE OF THE MOUNTING SURFACE OF THE WHEEL

PITCH CENTER DIAMETER: BOLT PATTERN

X FACTOR: CALIPER CLEARANCE

TIRE DIAMETER CALCULATOR

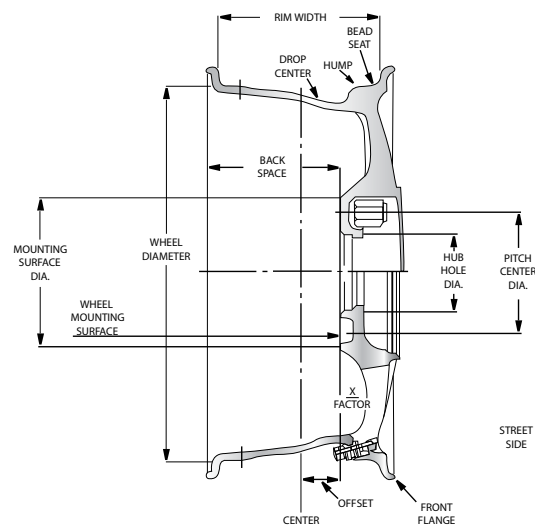
IN ORDER TO CALCULATE TIRE DIAMETER,
YOU ONLY NEED THE SIZE OF THE TIRE.

$$\frac{\text{CROSS SECTION WIDTH} \times \text{D.ASPECT RATIO} \times 2}{25.4}$$

WHEEL DIAMETER=OVERALL TIRE DIAMETER IN INCHES

FOR EXAMPLE:
235/45ZR-17
 CROSS SECTION ASPECT RATIO WHEEL DIAMETER
 $(235 \times 0.45 \times 2 \div 25.4) + 17 = 25.327$

CROSS SECTIONAL DIAGRAM



PAYMENT TERMS:

All orders will be delivered or shipped on a C.O.D. (cash or verified funds only) basis, unless an application has been approved for company check or open account. Personal checks will be accepted as long as the check writer is present at the time of sale and can provide proper identification, but will be limited to a maximum amount of \$500.00. Debit/Credit card payments will be accepted as long as the Debit/Credit card and Debit/Credit card holder are present at the time of sale, and can provide proper identification. Over the phone Debit/Credit card payments may be accepted under the following guidelines. A) They must be accompanied by a signed Debit/Credit card telephone acceptance form, and B) They will be subject to verification at the sole discretion of Wheel Specialists, Inc. A credit card surcharge of up to 3% may be assessed on applicable transactions. Open account terms will be Net 10th of the month following purchase. If payment is not received by the 20th of the month following purchase, the account will be placed on C.O.D. and a finance charge of 1.5% may be assessed on all invoices that remain unpaid after 30 days. Books will be closed on the last day of each month. All checks returned due to N.S.F. will be assessed a \$25.00 per check service charge. All merchandise will remain the property of Wheel Specialists, Inc. until paid in full.

FREIGHT/SHIPPING & HANDLING CHARGES:

All freight and/or shipping & handling related charges are to be paid by the customer unless prior arrangements are made at the time of sale.

CLAIMS:

Claims for shortage or error must be made within 3 days of receipt of shipment. Claims for merchandise damaged or lost in transit must be made at time of receipt, and documented immediately with the carrier. It will be the shipper's responsibility to file any claims with the carrier. Claims not made or handled within the specified period may not be honored.

RETURN POLICY:

Wheel Specialists, Inc. will gladly accept unused returns within 45 days of the original sale. Unused returns over 45 days will be assessed a 20% restocking fee. Return requests over 180 days will not be accepted. All returns must have prior approval and must be accompanied by a return authorization number. All return shipments must be sent freight prepaid, any freight collect shipments will be refused. It is the customer's responsibility to make sure merchandise being returned to Wheel Specialists, Inc. is packaged properly. Wheels must be bagged and placed in a box that is durable enough to withstand rough handling by freight carriers. Double boxing and the use of foam sheets is highly recommended. Wheels that have been mounted will not be accepted for return under any circumstances. It is the customer's responsibility to fit check wheels before mounting. Wheels that have been custom built, custom machined, or have had custom work (plating, polishing, painting, etc.) done to them are not returnable. Any merchandise "special ordered" by Wheel Specialists, Inc. is not returnable. Closeout and discontinued merchandise are not returnable.

Merchandise installed by Wheel Specialists, Inc. may be returnable depending on its condition. Merchandise must be in "new", "re-saleable" condition, and may not have been used for any period of time. Tires that are worn, wheels that have been dinged, nicked, and/or scraped, etc. do not constitute "new", "re-saleable" merchandise. These type of returns will be handled at the sole discretion of Wheel Specialists, Inc., and may be rejected or subject to miscellaneous labor, repair, and/or restocking fees.

CREDIT/REFUND POLICY:

Once it has been established that a credit will be issued based on our return policy, Wheel Specialists, Inc. will process a credit memo and post it to our books. These credits may only be used by the customer towards future purchases from our company. In the event Wheel Specialists, Inc. originally installed the merchandise, a refund may be eligible, and will be issued in the same form as the original payment, less any miscellaneous labor, repair, and/or restocking fees incurred.

WARRANTY CLAIMS:

Returns for defective merchandise must have prior approval and must be accompanied by a return authorization number. Merchandise must be sent to Wheel Specialists, Inc. freight prepaid. Wheel Specialists, Inc. will send defective merchandise back to the manufacturer for inspection. Credit will be issued to the customer as soon as Wheel Specialists, Inc. receives manufacturer approval. Freight or labor charges incurred may or may not be reimbursed depending on the terms of the manufacturer. Defective merchandise will be repaired or replaced at the sole discretion of the manufacturer. Damage to merchandise caused by shipping, handling, installation, collision, vandalism, use of chains, mechanical defects of a vehicle, racing or willful abuse is not covered under any warranty. Road hazard damage caused by pot holes, road construction, curbs, railroad tracks, uneven road surfaces, nail holes, etc., are not covered under warranty, unless an optional road hazard policy was purchased at the time of sale.

CHROME WHEEL WARRANTY CONDITIONS:

Wheels are under warranty for a period of one year from the original date of sale against defects of materials or workmanship such as peeling, flaking or blistering of plating. This warranty does not cover corrosion or discoloration caused by chemicals, detergents, polishing compound or coarse abrasives used in cleaning. Using these types of products can permanently damage your wheels and will void your warranty. Always run cool water on wheels before cleaning. Failing to cool wheels before cleaning can cause discoloration. Clean wheels frequently with mild soap and warm water. Freight and expenses incurred for labor and mounting or dismounting of tires are not covered by this warranty. This warranty is void if wheels are damaged with nicks from improper tire mounting, improper installation, accident, or curb damage, normal wear and tear, neglect or road impact. Pits and minor imperfections on a newly chromed wheel may be seen on occasion. These are results of the manufacturing process and are not plating defects. This warranty is not transferable.

O.E. CHROME EXCHANGE TERMS AND CONDITIONS:

Customer understands that when purchasing original equipment wheels and/or accessories for chrome exchange from Wheel Specialists, Inc., the "cores" will be due. Cores need to be returned to Wheel Specialists, Inc. within 15 days of the date of sale. Customer will be responsible for replacement costs of cores that are not returned within 30 days of the date of sale. Cores are to be returned at the customer's expense. Wheel Specialists, Inc. is not responsible for shipping charges related to returning cores owed to them. Cores must be the EXACT same part that was given to the customer in chrome, but in the original factory finish. Cores must also be free of any damage or defects. Customer will be responsible for any costs incurred to repair or replace cores returned that aren't in usable condition. Any chrome parts returned as cores are subject to an additional stripping charge, and may be rejected depending on their condition. Wheel Specialists, Inc. cannot be responsible for the condition of customer's parts given to them for chrome plating. It is the customer's responsibility to inspect their parts prior to shipping to determine their condition.

TAKE OFFS/LEFT MERCHANDISE:

Any "take off" merchandise left by customer and not picked up within 10 days after the sale will be disposed of at Wheel Specialists, Inc. discretion. No compensation will be awarded unless customer and Wheel Specialists, Inc. have a prior written agreement. Any merchandise left with Wheel Specialists, Inc. for machining, repair, polishing, plating, etc., must be paid for and picked up within 45 days after the work is done. If merchandise is still "unclaimed" after this time, Wheel Specialists, Inc. will consider the merchandise "abandoned", and have the right to dispose of it, at its discretion, with no refunds or compensation awarded to the customer.

PRICING/AVAILABILITY:

All prices are subject to change without notice. Availability of merchandise is solely subject to the manufacturer. Wheel Specialists, Inc. will not be held responsible for availability issues or problems that are beyond their control.

NOTES:

Wheel Specialists, Inc. recommends that all lug nuts or bolts be retorqued after 25 miles. Maintaining proper air pressure and rotating tires on a regular basis is crucial to tire wear. Wheel Specialists, Inc. recommends that all high performance tires be run and maintained within a +0/-10% psi range relative to the maximum psi listed on the sidewall of the tire. Maintaining air pressure within this range and rotating tires every 6,000 to 8,000 miles will insure maximum tread life of the tire. Vehicles that come equipped with air pressure monitoring systems (TPMS) installed as original equipment from the manufacturer may require that the pressure sensing devices be installed in the aftermarket wheel and tire assemblies in order to keep the system functioning properly. The customer needs to be aware that these pressure sensing devices were designed for the original equipment wheel and tire assemblies and may not be applicable or transferable to aftermarket wheel and tire assemblies. If the pressure sensing devices cannot be transferred or applied to the aftermarket wheel and tire assemblies, and there is not an "aftermarket" option to keep the pressure monitoring system operational, Wheel Specialists, Inc. cannot be responsible if the customer chooses to "bypass" or "disable" the system, and operate the vehicle with a "non-operating" air pressure monitoring system (TPMS). Aftermarket tires, wheels, and accessories sometimes require different hardware and accessories than that originally installed on a vehicle. Examples would include lug nuts, lug bolts, hub centric rings, etc. Aftermarket hardware and accessories provided and/or installed with aftermarket tires, wheels, and accessories are not compatible with original equipment tires, wheels, and accessories originally installed on a vehicle. Wheel Specialists, Inc. strongly advises that proper attention be paid when installing any tire, wheel, or accessory on a vehicle. Not using the proper hardware, checking for obstructions (center bore depth, old hub centric rings, spring clips, etc.), torquing to recommended specifications, and/or installing damaged or wrong merchandise, can all lead to serious damage to a vehicle and/or serious injury or death.

DISCLAIMER:

All of our aftermarket wheels, tires, and accessories are designed and produced to meet or exceed industry standards. These aftermarket parts will likely change the way a vehicle looks, handles, and performs from that of when it was originally equipped from the manufacturer. The customer understands that these changes will vary the vehicles handling, visibility, and braking ability from the manufacturer's original equipment. The customer assumes all risks associated with the driving changes caused by these aftermarket products.

SERVICES AND INFORMATION

COMPLETE MACHINE SHOP SERVICES

- Changing Bolt Patterns
- Steel Insert Bolt Patterns
- Shaving Back Pads
- Changing Offsets
- Making Wheels "Hub Centric"
- Drilling & Tapping Cap Lock Holes
- Center Boring
- Custom Centering Rings
- Multi-Piece Disassembly/Reassembly & Resealing

OTHER SERVICES

- Complete Wheel Finish Restoration
- Troubleshooting and Solving of Vibration/Ride Complaint Problems
- Repairing Curb Scraped Wheels
- Professional Fender Rolling
- Chrome Plating, PVD Chrome Plating, Gold Plating, Powdercoating, Painting and Polishing of OEM and Aftermarket Wheels
- Free Daily Valley Wide Pickup & Delivery in the Phoenix Metropolitan Area
- Free Weekly Pickup & Delivery in Tucson Metropolitan Area
- Offsite Wheel & Tire Package Installations
- Complete Machine Shop Services Performed in Our Onsite State of the Art Machine Shop
- Repairing and Resealing 2-Piece and 3-Piece Wheels
- Same Day Shipping for FEDEX / UPS Orders Received by 3:00 pm
- Mounting and Balancing of All Types of Wheels & Tires
- Great LTL Rates & Delivery Time Frames for Larger Palletized Shipments

INDUSTRY EXPERTISE

- Representatives "Second to none" in the industry in knowledge and expertise
- State of the art facility providing logistics "Second to none"
- Comprehensive inventory of today's hottest styles and fitments from the leading manufacturers in the industry
- Machining procedures to meet exacting standards
- Installation technicians specifically trained to mount, balance and install today's extreme wheel and tire packages

SALES TEAM	EXT	E-MAIL	DIRECT LINE
Andre Roberts	119	andre@wsiaz.com	480.222.7219
Cade Kisner	114	cade@wsiaz.com	480.222.7214
Chris Jacobson	106	cj@wsiaz.com	480.222.7206
Chris Priest	115	priest@wsiaz.com	480.222.7215
Chris Terry	111	terry@wsiaz.com	480.222.7211
Curtis Price	109	curtis@wsiaz.com	480.222.7209
Darren Young	113	darren@wsiaz.com	480.222.7213
Dave Sleater	107	dave@wsiaz.com	480.222.7207
Jeff Curran	116	jeff@wsiaz.com	480.222.7216
Jim Johnston	117	jim@wsiaz.com	480.222.7217
Justin Miller	118	justin@wsiaz.com	480.222.7218
Larry Grisham	110	larry@wsiaz.com	480.222.7210
Mike Lopez	112	mike@wsiaz.com	480.222.7212

BUSINESS HOURS

Monday-Friday 8 AM to 5 PM
Saturday 9 AM to 12 PM
ARIZONA TIME

Note: Arizona is on Pacific time in the summer
and Mountain time in the winter
(no daylight savings time observed)

OFFICE: 480.968.1314 • FAX: 480.968.1396 • GENERAL E-MAIL: INFO@WSIAZ.COM • WEBSITE: WWW.WSIAZ.COM

701 S. PERRY LANE, TEMPE, AZ 85281-2918

